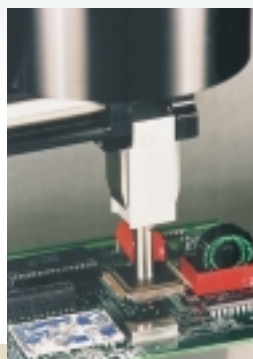


**DISTINCTIVE FEATURES**

- Patented 3-D compliance provides unlimited part handling flexibility
- Handles virtually any type of component including axials, radials, header strip, DIP's, SIP's, connectors, transformers, relays, TO-220's, displays, LED's, surface mounts, small circuit boards, PGA's... to name a few
- Patented part release feature allows for dense brickwall insertion sequences
- Mis-insertion sensing detects bent leads and mis-drilled boards
- Part-in-grip detection monitors feeder and part insertion status
- Programmably selective grip pressures allow for delicate part handling when required
- Eliminates assembly sequence requirements
- Utilizes **CHAD's** advanced body grip technology for optimum flexibility and performance

**PRODUCT DESCRIPTION**

The **CHAD** patented PIE is the ideal solution for medium to high mix through-hole, SMT, and mixed technology PCB applications. Mimicking the flexibility of the human hand, the intelligence of the PIE's unique 3-D floating head allows body gripping while compensating for variations in the body to lead relationship. The advanced technology of the PIE provides unlimited flexibility, handling all through-hole and surface mount components, *without the need for tool changes*. When handling SMD's, the PIE can be used in a vacuum pick mode, or 3-D floating mode to grip SMD's by the body while maintaining lead coplanarity when the part style doesn't allow for vacuum pick. The PIE is interchangeable on all **CHAD** systems for maximum flexibility.



Quality and aesthetics are an integral part of all **CHAD** systems ensuring low cost, reliable, high performance operation.



1565 S. Sinclair Street • Anaheim, CA 92806  
 Tel (714) 938-0080 • Fax (714) 938-0630  
 Web site: [www.chadindustries.net](http://www.chadindustries.net)